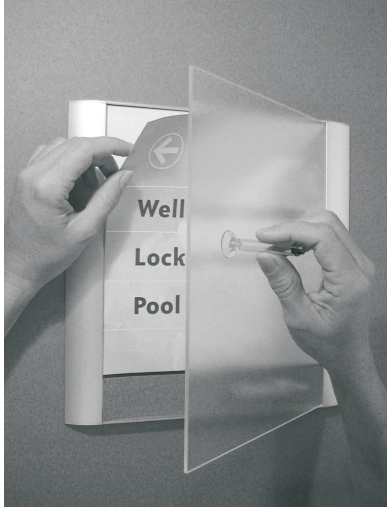


FullView™



'04 INDUSTRIAL DESIGN EXCELLENCE AWARDS



Worldwide Patents Pending

A Low Profile Graphic Display System

FullView represents the next level in sign systems compatible with digital printing output. Environmentally friendly, tamper resistant and economical, yet design flexible and comprehensive, FullView is without equal.

Your Source for Sign Systems



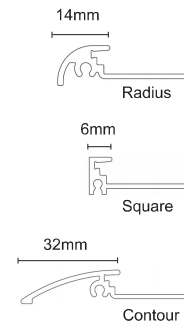
SPECIFICATION GUIDE

How it Works?

FullView is 100% modular and updateable. It can accept a wide range of inserts, graphics and DDA solutions. FullView is also available in many sizes and colours, to suit virtually every sign system need. FullView may also be used in conjunction with APCO's comprehensive Accord 15 sign system, thus truly making it a Total System Solution.

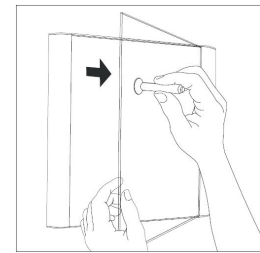
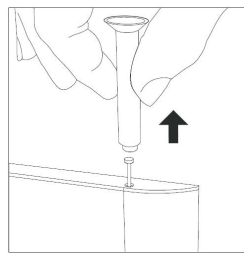
Graphics are protected by an anti-glare clear lens and are changed by removing a unique, concealed Locking Pin using a special Magnet and Suction Cup Tool provided by APCO.

Profile Shapes



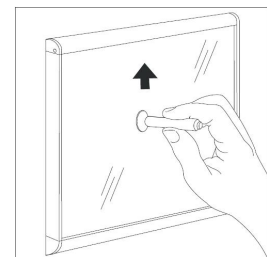
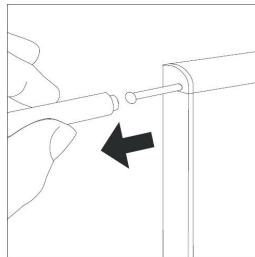
Vertical Configuration

A concealed Locking Pin, located in the upper right corner of the sign, is removed using a special Magnet Tool. Sign Insert is shifted to the right and then, using a Suction Cup Tool provided, pulled outward, removing it from the frame. After the clear lens has been removed from the frame, the display may then be changed.



Horizontal Configuration

A concealed Locking Pin, located in the upper left corner of the sign, is removed using a special Magnet Tool. Using a Suction Cup Tool provided, the Sign Insert is lifted up. Once the clear lens is lifted up it may be pulled outward, removing it from the frame. The display may then be changed.

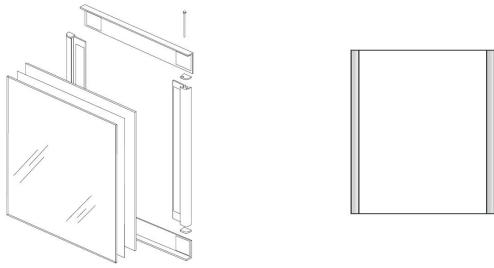


Holder Finishes

Standard
Silver Anodised

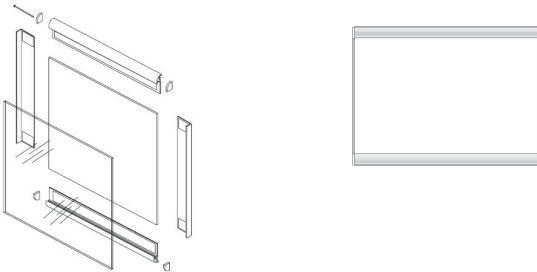
Custom
Powder Coated
 200+ RAL colours

Vertical Wall Mount Modules



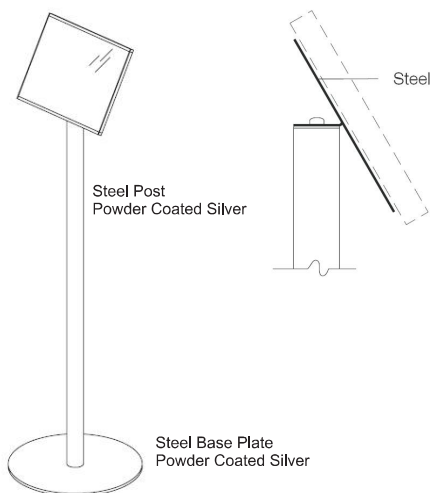
A Size	Code	Insert Size
A1 Portrait A1 Landscape	FV_A1P(V) FV_A1L(V)	594mm x 841mm
A2 Portrait A2 Landscape	FV_A2P(V) FV_A2L(V)	420mm x 594mm
A3 Portrait A3 Landscape	FV_A3P(V) FV_A3L(V)	297mm x 420mm
A4 Portrait A4 Landscape	FV_A4P(V) FV_A4L(V)	210mm x 297mm
A5 Portrait A5 Landscape	FV_A5P(V) FV_A5L(V)	148mm x 210mm
A6 Portrait A6 Landscape	FV_A6P(V) FV_A6L(V)	105mm x 148mm

Horizontal Wall Mount Modules



A Size	Code	Insert Size
A1 Portrait A1 Landscape	FV_A1P(H) FV_A1L(H)	594mm x 841mm
A2 Portrait A2 Landscape	FV_A2P(H) FV_A2L(H)	420mm x 594mm
A3 Portrait A3 Landscape	FV_A3P(H) FV_A3L(H)	297mm x 420mm
A4 Portrait A4 Landscape	FV_A4P(H) FV_A4L(H)	210mm x 297mm
A5 Portrait A5 Landscape	FV_A5P(H) FV_A5L(H)	148mm x 210mm
A6 Portrait A6 Landscape	FV_A6P(H) FV_A6L(H)	105mm x 148mm

FS300 Free Standing Pedestal



FullView Units are easily affixed to a 38mm diameter circular post at 1070mm via a modular steel mounting plate. The base plate acts as a counter weight at the bottom of the post. The FS300 can accept both Vertical and Horizontal display configurations - Check with APCO for size limitations.