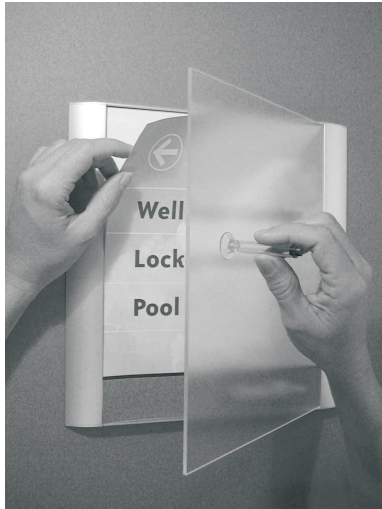


FullView™



Worldwide Patents Pending

A Low Profile Graphic Display System

FullView represents the next level in sign systems compatible with digital printing output.

Environmentally friendly, tamper resistant and economical, yet design flexible and comprehensive, FullView is without equal.

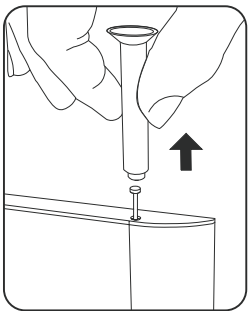
Your Source for Sign Systems



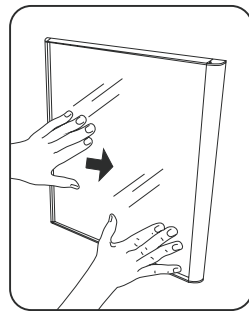
ASSEMBLY GUIDE

Wall Attached Basic Series

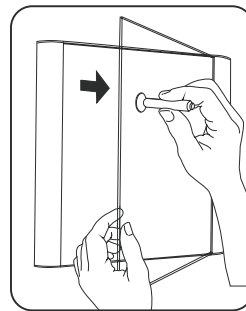
Insert Replacement - Vertical Configuration



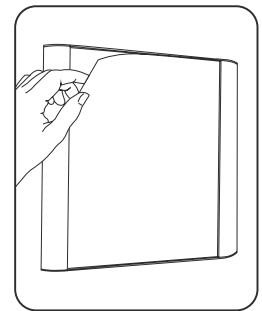
1. To remove clear lens, first place magnet over Locking Pin located on top right hand corner of sign. If pin does not lift, shift clear cover to the left and try again.



2. Shift clear lens to the right. For smaller signs the suction cup may be used to do this. For larger signs, use your hands as shown.

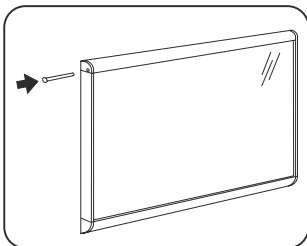


3. Attach Suction Cup Tool to the left side of the clear lens and press to engage. Pull outward while holding clear lens edge.

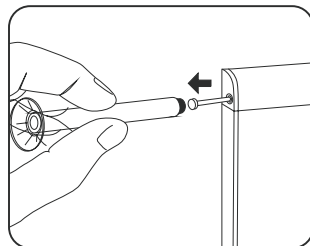


4. After new paper display is inserted into holder, reverse steps 1 - 3. *Note: When replacing clear cover, make sure non-glare finish side is facing outward.*

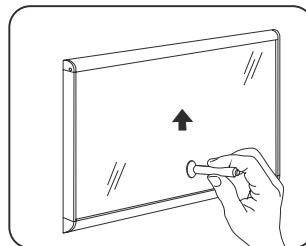
Insert Replacement - Horizontal Configuration



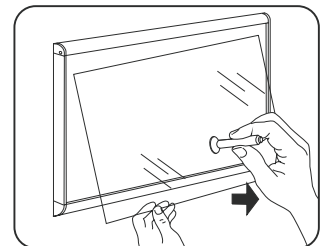
1. To remove clear lens, first locate Locking Pin on top left hand side of signs.



2. Place magnet over pin at the top left corner of sign, thus removing security pin from the slot.

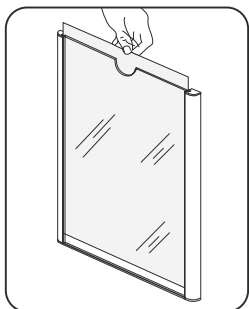


3. Affix Suction Cup Tool to lower centre of clear lens and press inward to engage. Lift clear cover upward into the space previously blocked by the locking pin.



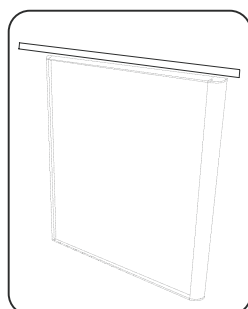
4. Pull clear lens outward from lower centre to remove. Insert new paper display, and reverse steps 1-3. *Note: When replacing clear cover, make sure non-glare finish side is facing outward.*

Top Access Insert Removal

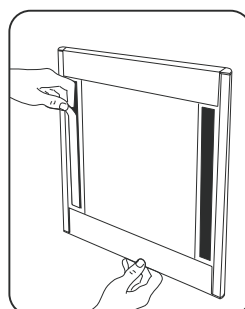


1. To remove insert, note top centre location for finger access to lift. *Note: Clear cover is not removable for Top Access FullView.*

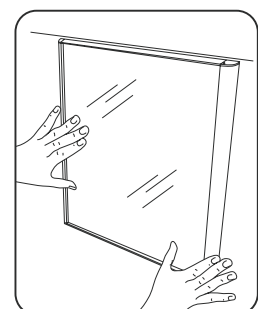
Wall Attachment Instructions Vinyl Tape (VT)



1. Determine desired attachment location. Measure and mark top edge location of sign with low tack masking tape or light pencil line.



2. Remove tape liner from back side of FullView sign.

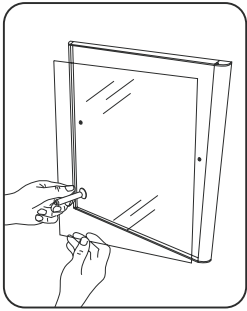


3. Align top edge of sign to tape or line, press firmly across tape area.

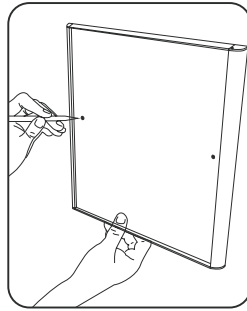
Patents Pending
All Design Rights Reserved

Wall Attached Basic Series

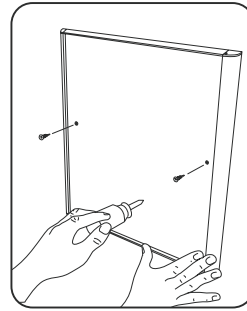
Wall Attachment Instructions - Mechanical Fasteners (MF)



1. Remove clear lens from holder and set aside.



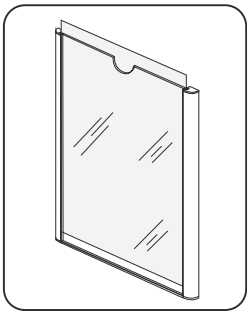
2. Locate predrilled holes and transfer the hole pattern to the wall surface with a pencil or similar.



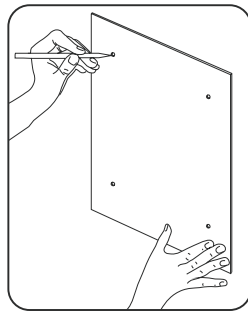
3. Use only #6 Flat Head sheet metal or wood screws for attachment. Length and type determined by installer and / or wall surface materials.

Anchors may be required depending upon wall type / conditions.

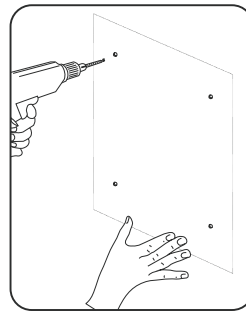
Top Access Wall Attachment Instructions - Mechanical Fasteners (MF)



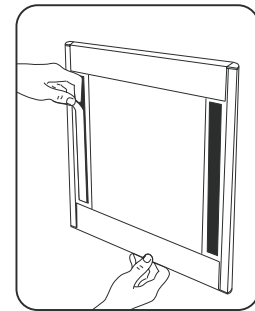
1. Top Access clear lens cannot be removed. A metal surface 'sub-plate' must be attached to the wall surface with mechanical fasteners prior to installation.



2. Transfer hole pattern from 'sub-plate' to wall surface.



3. Drill and set wall anchors, and attach sub-plate to wall. Only use pan head or flat head screws to attach plate so as not to interfere with FullView backer.

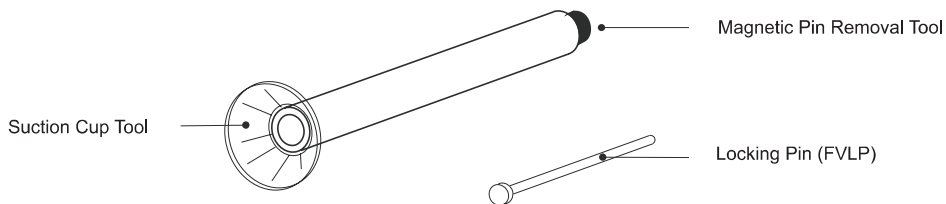


4. Remove tape liner from FullView sign. Align sign to sub-plate press firmly across tape area.

Locking Pin Removal Tool / Insert Removal Tool

Part Code: SCT/MG/FV

This magnetic tool will permit easy removal of Locking Pin. Use the suction cup tool (SCT) to remove clear lens and access paper insert.



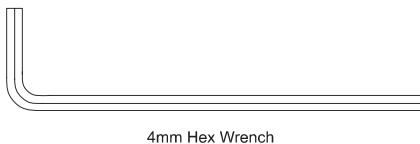
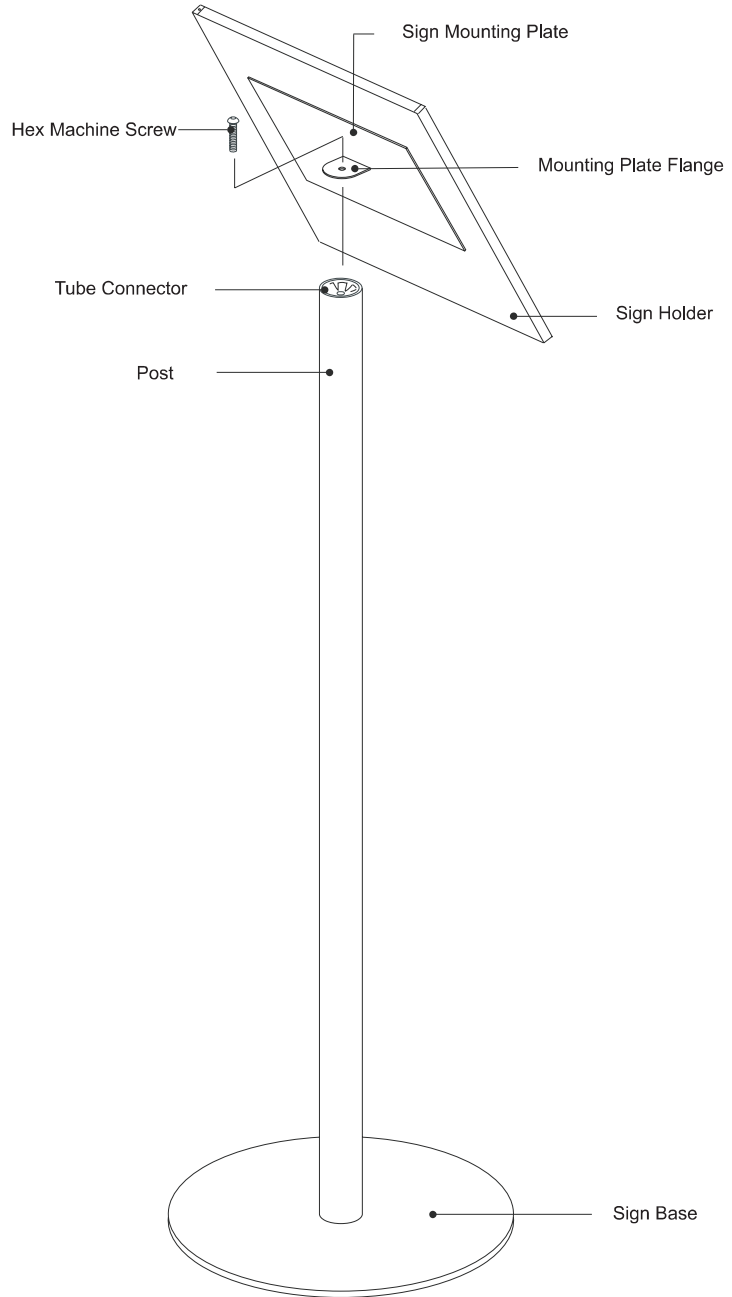
FS300 Free Standing Series

The Single Post Pedestal accommodates displays at a 60 degree incline. Typically, the sign holder will be attached to be base and wrapped separately. Use care when unwrapping.

1. Remove hex wrench from carton packing. Loosen hex head machine screw, remove fender washer and cardboard shipping stabilizer. Retain screws for assembly.
2. Place aside carton packing, wrench and screw. Remove sign base and post from carton.
3. Detach sign holder from bottom of base. Remove bubble pack material from base and post.
4. Remove bubble wrap from sign assembly and locate mounting plate flange. Refer to illustration.
5. Position plate flange over post and insert hex bolt through hole. Align bolt with tube connector and hand thread until tight.

Use hex wrench to further tighten bolt. Do not overtighten, as fixture may be distorted.

Retain wrench for use if future tightening is necessary.



No. 6 x 25mm Flat HD Socket
- SS Machine Screw for
Base attachment



No. 6 x 25mm Pan HB Socket
- SS Machine Screw for
Sign Holder attachment